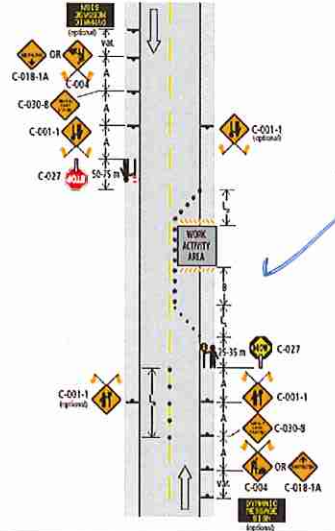


**WORK FROM POLE 1 TO POLE 57  
WILL FOLLOW TRAFFIC FIGURE 7.8  
SINGLE LANE ALTERNATING**

Figure 7.8: Lane Closure with TCPs – Single Lane Alternating – Short and Long Duration



Regulatory Speed Limit	50 km/h	60 km/h	70 km/h	80 km/h	90-100 km/h
1a Taper Length For Lane Closure	35 (1:10)	55 (1:15)	75 (1:20)	90 (1:25)	110 (1:30)
1b Taper Length For Shoulder Work on Where TCPs Used (Min. 3 Cones)	5	8	10	12	15
2 Maximum Distance Between Cones or Tubular Markers for 1a	10	10	10	10	10
3 Minimum Tangent Distance Between Tapers	30	60	90	120	150
4 Distance Between Construction Signs	40	60	80	100	150

**LEGENDS:**

- SIGN STAND
- DELINEATORS
- TCP
- ARROWBOARD TRUCK
- POLE
- REMOVE POLE
- MANHOLE/SERVICE BOX
- NEW AERIAL CABLE
- NEW U/G CABLE

**Scope:**

- Place and remove telecom poles for Telus

**Dates:**

- September 18 – December 31, 2017

**Hours:**

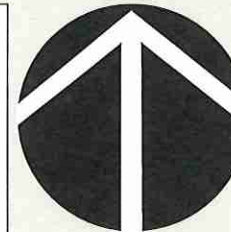
- 7:00am – 5:00pm

**Drawing #:**

- 2646030

**Notes:**

- All traffic control devices and signs to comply with Latest MOTM Manual Work on Roadway



P1 to P57

COMPANY: DIXON NETWORKS CORPORATION

CONTACT: JAESIK YOON  
PHONE: 604-940-8817 EXT. 225

